

# Discussion Papers

# 795

Christian Dreger • Jürgen Wolters

**M3 Money Demand and  
Excess Liquidity in the Euro Area**

Berlin, May 2008

Opinions expressed in this paper are those of the author and do not necessarily reflect views of the institute.

## IMPRESSUM

© DIW Berlin, 2008

DIW Berlin  
German Institute for Economic Research  
Mohrenstr. 58  
10117 Berlin  
Tel. +49 (30) 897 89-0  
Fax +49 (30) 897 89-200  
<http://www.diw.de>

ISSN print edition 1433-0210  
ISSN electronic edition 1619-4535

Available for free downloading from the DIW Berlin website.

Discussion Papers of DIW Berlin are indexed in RePEc and SSRN.  
Papers can be downloaded free of charge from the following websites:

[http://www.diw.de/english/products/publications/discussion\\_papers/27539.html](http://www.diw.de/english/products/publications/discussion_papers/27539.html)

<http://ideas.repec.org/s/diw/diwwpp.html>

[http://papers.ssrn.com/sol3/JELJOUR\\_Results.cfm?form\\_name=journalbrowse&journal\\_id=1079991](http://papers.ssrn.com/sol3/JELJOUR_Results.cfm?form_name=journalbrowse&journal_id=1079991)

# M3 money demand and excess liquidity in the euro area

*Christian Dreger and Jürgen Wolters<sup>1</sup>*

**Abstract:** Money growth in the euro area has exceeded its target since 2001. Likewise, recent empirical studies did not find evidence in favour of a stable long run money demand function. The equation appears to be increasingly unstable if more recent data are used. If the link between money balances and the macroeconomy is fragile, the rationale of monetary aggregates in the ECB strategy has to be doubted. In contrast to the bulk of the literature, we are able to identify a stable long run money demand relationship for M3 with reasonable long run behaviour. This finding is robust for different (ML and S2S) estimation methods. To obtain the result, the short run homogeneity restriction between money and prices is relaxed. In addition, a rise in the income elasticity after 2001 is taken into account. The break might be linked to the introduction of euro coins and banknotes. The monetary overhang and the real money gap do not indicate significant inflation pressures. The corresponding error correction model survives a battery of specification tests.

**Keywords:** Cointegration analysis, error correction, excess liquidity, money demand, monetary policy

**JEL Classification:** C22, C52, E41

---

<sup>1</sup> Dreger: German Institute for Economic Research (DIW Berlin), Mohrenstr. 58, D-10117 Berlin, cdreger@diw.de, Wolters: Freie Universität Berlin, Boltzmannstr. 20, D-14195 Berlin, wolters@wiwiss.fu-berlin.de. The paper was presented at a symposium at Schloss Wartensee, April 18-19, 2008. We thank the discussant Ulrich Müller, Princeton, and the participants of the symposium for their helpful comments.

# 1 Introduction

The primary goal of the European Central Bank (ECB) is to maintain price stability. To achieve this objective the ECB has developed the so called two pillar strategy, where monetary aggregates play a crucial role. In particular, one pillar is based on the economic analysis of price risks in the short term, while the other one is built on the analysis of risks to price stability in the medium and long run. Given the complexity of the monetary transmission process central bankers “often also take into account some simple rules of thumb to guide or cross-check their action. One such rule is based on the fact that inflation is always a monetary phenomenon in the medium to long term. This rule recommends that central bankers be generally aware of monetary developments in order to assess inflation trends” (ECB, 2004a, p47). In fact, the reference value for monetary growth is taken as a benchmark for assessing monetary developments. It is based on price stability which is seen to be consistent with consumer price inflation of below 2 percent. Potential output growth is estimated at around 2 to 2.5 percent, and a negative trend in velocity leads to an increase of money growth in a range between 0.5 and 1 percent. Given these assumptions, the target for money growth has been set at 4.5 percent per annum.

Since the end of 2001, monetary conditions became abnormally loose. Actual monetary growth has continuously exceeded its target. For example, M3 increased by 9.9 percent in 2006, after 7.3 percent in 2005. Due to uncertainties in the labour and capital market developments and a higher risk aversion of agents due to significant losses at asset markets liquidity preferences have increased. Together with a relatively flat term structure of interest rates agents shifted their portfolio towards safe and liquid assets. During this process, inflation did not accelerate at all, thereby questioning whether a fixed reference path is a reliable tool to interpret the monetary evolution. If the link between money and prices turns out to be increasingly unstable, money growth is not well-designed to analyze future inflation prospects and support policy decisions.

For monitoring the inflation process, a stable money demand function is extremely important, at least as a long run reference (see ECB, 2004a, p64). If this condition is met, money demand can be linked to the real side of the economy. “Tracking the evolution of actual M3 developments against the paths implied by estimated money demand models

is an important component of the ECBs monetary analysis” (ECB, 2004b, p49). For the relevance of monetary aggregates in performing monetary policy see also von Hagen (2004).

However, recent evidence has cast serious doubts concerning the robustness of money demand functions. If data up to 2001 are used, standard money demand functions for the euro area can be firmly established, see Fagan and Henry (1998), Hayo (1999), Funke (2001), Coenen and Vega (2001), Bruggemann, Donati and Warne (2003), Brand and Cassola (2004) and Holtemöller (2004a, b). Extending the sample to a more recent period usually destroys these findings, as a stable long run relation between the variables cannot be detected anymore, see Gerlach and Svensson (2003), Greiber and Lemke (2005) and Carstensen (2006). This has led some authors to analyse relationships between the core components of the original variables, either generated by the HP filter or moving averages, see Gerlach (2004) and Neumann and Greiber (2004). In other studies, measures of uncertainty are allowed to enter the long run equation. Using this modification, Greiber and Lemke (2005) and Carstensen (2006) find support for a stable money demand function. Nevertheless, as proxies for uncertainty should be stationary, this approach is not really convincing. Greiber and Setzer (2007) extend the standard specification by real house prices and housing wealth and obtained a stable long run relation with data up to 2006. Boone and van den Noord (2008) also include house and share prices in the long run money demand equation. Brüggemann and Lütkepohl (2006) have reported a stable money demand equation for the euro area based on data up to 2002. In contrast to the other papers, they used German instead of euro area series until the end of 1998.

Despite the results from the previous literature, this paper presents strong evidence in favour of a stable long run money demand relationship specified in terms of a standard set of explanatory variables. The existence of such a long run relation allows to quantify excess liquidity which is a threat to price stability. In principle, excess liquidity can be measured by different concepts, see Masuch, Pill and Willeke (2001) for a discussion. One option is the deviation of actual money from its equilibrium value, the latter calculated on the basis of the ECB’s reference value for M3 growth. However, one has to choose arbitrarily a base period. The monetary overhang defined as the difference between the observed monetary aggregate and the estimated long run money demand rela-

tion is a better indicator, as it takes the actual situation of the economy into account (ECB, 2001). Furthermore, a real monetary gap can be considered. In addition to the error correction term, the deviations of the explanatory variables from their equilibrium values play a vital role. In the subsequent analysis, both measures do not point to severe inflation pressures in the future.

The rest of the paper is organized as follows. Section 2 reviews the specification of the long-run money demand function. In section 3 the series used in the empirical analysis are discussed. Specification and estimation of money demand functions in error correction form has been the customary approach to capture the nonstationary behaviour of the time series involved. Evidence regarding the cointegration properties is provided in section 4. In section 5 an error correction model for money demand is presented. Section 6 concludes.

## 2 Specification of money demand

In this paper, a widely used specification of money demand is chosen as the point of departure. According to Ericsson (1998), the specification of the demand for a broad monetary aggregate leads to a long run relationship of the form

$$(1) \quad m_t - p_t = \delta_0 + \delta_1 y_t + \delta_2 R_t + \delta_3 r_t + \delta_4 \pi_t$$

where  $m$  is nominal money taken in logs,  $p$  is the log of the price level, and  $y$  log income, representing the transaction volume in the economy. Opportunity costs of holding money are proxied by long ( $R$ ) and short ( $r$ ) term interest rates and the annualized inflation rate, i.e.  $\pi=4\Delta p$  in case of quarterly data. The index  $t$  denotes time.

Price homogeneity is assumed to be valid as a long-run condition. In fact, the money stock and the price level might be integrated of order 2, I(2). If these variables are cointegrated, real money balances could be I(1). Then, the long run homogeneity restriction is appropriate to map the money demand analysis into an I(1) system, see Holtemöller (2004b). According to textbook presentations, the scale variable is expected to exert a positive effect on nominal and real money balances. Typical models in the literature differ in the opportunity cost measure, see Golinelli and Pastorello (2002) for a survey.

If the costs refer to earnings of alternative financial assets, possibly relative to the own yield of money balances, their coefficients should enter with a negative sign. Inflation is usually interpreted as a part of the opportunity costs, as it represents the costs of holding money in spite of holding real assets, see Ericsson (1998). But its inclusion can be justified by different arguments. In the presence of adjustment costs and nominal inertia, Wolters and Lütkepohl (1997) have shown that inflation should enter the long run relation for real balances, even if it is not relevant in the equation for nominal balances. See also Wolters, Teräsvirta and Lütkepohl (1998) on this point. Thus, the variable allows to discriminate whether adjustment is in nominal or real terms (Hwang, 1985). Alternatively, the inflation rate provides a convenient way to generalize the short run homogeneity restriction imposed between money and prices. While the restriction is justified from a theoretical point of view, there might be a lack of support in the particular observation period.

The parameters  $\delta_1 > 0$ ,  $\delta_2 < 0$ ,  $\delta_3$  and  $\delta_4$  denote the income elasticity, and the semielasticities with respect to the return of other financial assets and inflation, respectively. The parameter  $\delta_3$  is positive in case that  $r$  is mainly a proxy for the own rate of interest of holding money balances, but negative otherwise. Due to the ambiguity in the interpretation of the inflation variable, the sign of its impact cannot be specified on theoretical reasoning.

### **3 Data and preliminary analysis**

Since the introduction of the euro on January 1, 1999 the ECB is responsible for the implementation and conduction of monetary policy in the euro area. As the time series under the new institutional framework are too short to draw robust conclusions, they have to be extended by artificial data. Usually, euro area series prior to 1999 are obtained by aggregating national time series, see for example Artis and Beyer (2004). Different aggregation methods are available and can lead to different results. By comparing aggregation based on methods using variable or fixed period exchange rates, Bosker (2006) has emphasized that the differences are substantial prior to 1983, in particular for interest and inflation rates. However, they are almost negligible for money demand variables from 1983 onwards. The European Monetary System started working in 1983, and

the financial markets of the member countries have become much more integrated since then. Therefore, the observation period in this study is 1983.1-2006.4, where quarterly seasonally adjusted series are used.

Nominal money balances are taken from the ECB monthly bulletin database and refer to M3 and end of period values. The short and long term interest rates  $r$  and  $R$  are also obtained from this source and defined by the end of period 3month Euribor and 10 years government bond rate, respectively. Nominal and real GDP as a proxy for income are taken from Eurostat, the latter defined as chain-linked volumes with 2000 as the reference year. The GDP deflator (2000=100) is constructed to be the ratio of nominal to real GDP multiplied by 100. Due to evidence presented by Holtemöller (2004a), the Brand and Cassola (2004) GDP data should be used in earlier periods, as these data yield stable and economically interpretable results. Note that this choice does not affect any conclusions in this paper, as instability of money demand is only a problem in recent years. In order to obtain real money balances, the nominal money stock is deflated with the GDP deflator. Figure 1 shows the evolution of series in levels (A) and first differences (B) in the 1983.1-2006.4 period.

*-Figure 1 about here-*

Several comments are in order. First, all variables with the exception of the term structure are integrated of order 1,  $I(1)$ , implying that they are nonstationary in levels, but stationary in first differences. The results of the integration tests are omitted here in order to save space, but can be obtained from the authors upon request. This well known result holds for different observation periods, compare the results in the aforementioned empirical studies. Second, outliers occur in real money balances, see the graph for the first differences. The first one (1990.2) is due to the German unification, while the other one (2001.1) refers to stock market turbulences, see Kontolemis (2002). In particular, the large decrease in stock markets have raised the demand for liquid assets. In the subsequent analysis, these outliers are acknowledged by two impulse dummies, which are equal to 1 in the respective period and 0 otherwise ( $d902$  and  $d011$ ). Note that real GDP

has also an outlier in 2001.1 which may compensate the outlier in real balances at the same period.

*-Figure 2 about here-*

Looking at the scatterplot between real money and real GDP reveals a clear permanent change in the income elasticity starting in 2002.1 that coincides with the introduction of euro coins and banknotes to the public (figure 2). A break in the income elasticity has also been reported by Lütkepohl, Teräsvirta and Wolters (1999) in case of the German M1 aggregate. According to the strategy outlined in that paper, the break is captured by an additional income variable  $y^*$  as the product of  $y$  and a step dummy  $s_{021}$  equal to 1 from 2002.1 until the end of the sample and 0 in the period before. The transitory change in the income elasticity between 1992 and 1994 occurs just after the fall of the iron curtain, where a negative growth rate in real income and a positive change in real money balances can be observed.

## **4 Cointegration analysis**

In systems including real money balances, real income, nominal interest rates and inflation, at least one cointegration relationship should represent a long run money demand equation in the style of (1). To explore the cointegration properties of different sets of variables, the Johansen (1995) trace test is used as the workhorse, see table 1 for the results. To correct for finite samples, the trace statistic is multiplied by the scale factor  $(T-pk)/T$ , where  $T$  denotes the number of the observations,  $k$  the number of the variables and  $p$  the lag order of the underlying vector autoregression model in levels (Reimers, 1992). The lag length of the VARs is determined by the Schwarz criterion and is equal to one throughout the analysis. All models are estimated with an unrestricted constant and the two impulse dummies.<sup>2</sup>

---

<sup>2</sup> All computations have been carried out with EViews 6 and JMulti 4.

There is a strong indication for exactly one cointegrating vector in the  $(m-p, y, \pi)$  and  $(m-p, y, y^*, \pi)$  system, respectively. This evidence can be consistent with a money demand relationship in the long run, probably without the interest rates. Due to the increase of the income elasticity since 2002, the cointegration parameters in  $(m-p, y, \pi)$  are unstable<sup>3</sup>. Therefore, the further analysis refers to the  $(m-p, y, y^*, \pi)$  system, which does not suffer from parameter instability. As a drawback, replacing  $\pi$  with interest rates does not lead to a significant long run equation. However, the economic content of the long run relation implied by the  $(m-p, y, y^*, \pi)$  system can be improved. In fact, the term structure  $R-r$  can be embedded, because it is a stationary variable. An augmented Dickey Fuller unit root test rejects the null hypothesis of nonstationarity with a  $p$ -value of 0.03.

*-Table 1 about here-*

As a standard procedure, the cointegration parameters are revealed using Johansen's reduced rank maximum likelihood (ML) estimator. However, the ML estimator should be applied with caution because it can produce extremely distorted and unreliable estimates in small samples. Furthermore, the usual diagnostic tests are not helpful in detecting the distorting estimates. To overcome the problem, Brüggemann and Lütkepohl (2005) have recommended a two step generalized least squares estimator, which is more robust in this regard. This so called S2S estimator is used as a cross-check to the ML results.

The cointegrating relationships are estimated in two variants, both with and without the term structure. The results

---

<sup>3</sup> Using recursive estimation methods, Dreger and Wolters (2006) have demonstrated that instability does not distort the results, if data up to 2004.4 are employed. If the observation period is shifted beyond this point, the parameters become increasingly unstable in this specification.

$$\begin{aligned}
(2) \quad ec_{1,ML} &= (m-p) - 0.955 y - 0.031 y^* + 6.743 \pi \\
&\quad \quad \quad (0.115) \quad \quad (0.005) \quad \quad (0.791) \\
ec_{2,ML} &= (m-p) - 1.096 y - 0.029 y^* + 5.534 \pi + 4.855(R-r) \\
&\quad \quad \quad (0.080) \quad \quad (0.004) \quad \quad (0.566) \quad \quad (0.959) \\
(3) \quad ec_{1,S2S} &= (m-p) - 1.249 y - 0.025 y^* + 3.895 \pi \\
&\quad \quad \quad (0.090) \quad \quad (0.004) \quad \quad (0.617) \\
ec_{2,S2S} &= (m-p) - 1.297 y - 0.023 y^* + 3.348 \pi + 3.233(R-r) \\
&\quad \quad \quad (0.064) \quad \quad (0.003) \quad \quad (0.450) \quad \quad (0.761)
\end{aligned}$$

are very similar for the different estimation methods (standard errors in parantheses). The inclusion of the term structure of interest rates contributes to slightly more precise estimates. The S2S parameters seem to be more stable than their ML counterparts. After controlling for a structural break in the income elasticity, the long run relationship appears to be stable over time.

*-Figure 3 about here-*

Because of its improved properties, the model including the term structure is used in the subsequent analysis. Under the assumption that  $r$  approximates the own rate of M3 the term structure may be interpreted as the opportunity costs of holding bonds. However, all the results remain valid when the more compact version is used. The mean-adjusted deviations from the long run relation are displayed in figure 3 for the ML and S2S estimation methods. Overall, the equilibrium errors on the base of the ML procedure seem to produce larger deviations from equilibrium, thereby reflecting the well known deficits of this approach in small samples. However, no abnormal behaviour can be detected over the whole period.

The monetary overhang coincides with the respective error correction term, as the latter shows the deviations from the long run (ECB, 2004b, p60). The overhang falls far below 0.1 percent of the real money stock under both estimation methods. As an alternative, the so called real monetary gap ( $rmg$ ) is considered, see Hallman, Porter and Small

(1991). Compared to the former measure, the deviations of the explanatory variables from their equilibrium are also taken into account. In particular, the real monetary gap is defined as

$$(4) \quad rmg_t = ec_t + \delta_1(y_t - \bar{y}_t) - \delta_2(R_t - \bar{R}_t) - \delta_3(r_t - \bar{r}_t) - \delta_4(\pi_t - \bar{\pi}_t)$$

see ECB (2004b, p60). The bar variables represent equilibrium or desired levels of the respective series. Since these measures are unobservable, they have to be estimated in advance. As different estimation methods can be involved here, implying that the results are arbitrary to some degree.

*-Figure 4 about here-*

To explore the size and development of the real monetary gap, parameter estimates from the extended versions of equations (2) and (3) are employed. The equilibrium level of income is estimated as the HP-filtered component of real GDP. The long run value for the term structure is set equal to the mean of the series (0.01), and inflation in the steady state corresponds to the ECBs inflation target of 2% (0.02). The results are displayed in figure 4. Both ML and S2S methods indicate an increase in the real monetary gap until the mid of the 1990s. Since 1999, the gap has declined. In the last years,  $rmg$  is on the rise again, but has remained negative even in recent periods. To sum up, no future inflation pressure can be detected from this behaviour.

## **5 Error correction modeling**

Whether or not the cointegrating relationship can be interpreted in terms of a money demand function is inferred from the error correction model. However, as we are mostly interested in the stability of a money demand equation, the analysis is concentrated on conditional single equation models. A conditional model may lead to constant coefficients even if a shift is present in the reduced form. Given the identification problems in

full systems, a structural model for an individual variable might be easier to develop using the single equation context<sup>4</sup>.

At the initial stage of the estimation process, the contemporaneous values and the first four lags of the changes of all variables, a constant and the two impulse dummies are considered in addition to the error correction terms,  $ec_{ML}$  and  $ec_{S2S}$ , specified in (2) and (3). Again, the versions augmented by the term structure are used. Variables with the lowest and insignificant  $t$ -values are eliminated subsequently from the regression (0.1 level). The final money demand relationship is ( $t$ -values in parantheses)

$$(5) \quad \Delta(m-p)_t = \underset{(7.93)}{0.028} - \underset{(6.15)}{0.039} ec_{ML,t-1} + \underset{(8.13)}{0.034} d902 + \underset{(7.25)}{0.031} d011 - \underset{(6.19)}{0.204} \Delta\pi_t \\ + \underset{(2.61)}{0.173} \Delta(m-p)_{t-1} + \underset{(2.45)}{0.158} \Delta(m-p)_{t-3} - \underset{(2.89)}{0.193} \Delta(m-p)_{t-4} + \underset{(3.38)}{0.253} \Delta r_t + \hat{u}_t$$

$$(6) \quad \Delta(m-p)_t = \underset{(5.41)}{-0.048} - \underset{(6.28)}{0.055} ec_{S2S,t-1} + \underset{(8.13)}{0.034} d902 + \underset{(6.99)}{0.030} d011 - \underset{(5.90)}{0.185} \Delta\pi_t \\ + \underset{(2.48)}{0.165} \Delta(m-p)_{t-1} + \underset{(2.28)}{0.146} \Delta(m-p)_{t-3} - \underset{(3.05)}{0.201} \Delta(m-p)_{t-4} + \underset{(3.15)}{0.234} \Delta r_t + \hat{u}_t$$

T=96 (1983.1-2006.4).

For both variants we end up with the same specification with very similar coefficients and extremely high  $t$ -values for the error correction coefficients. According to their negative values, excess money lowers money growth, as one expects in a stable model. Moreover, changes in inflation are significant. The results point to substantial inertia in the adjustment of real money balances, as the adjustment to the long run equilibrium is very low and up to four lagged changes of money demand are relevant in the specifications. Finally, as the  $t$ -values indicate, the impulse dummies  $d902$  and  $d011$  should enter these equations.

Standard specification tests are largely supportive for the model, see table 2.  $LM$  is a Lagrange Multiplier test for autocorrelation in the residuals up to order 1, 4 and 8. The

---

<sup>4</sup> The single equation error correction model can be even justified by testing on weak exogeneity. If the S2S estimator is used, all variables can be classified as weakly exogeneous with respect to the cointegrating relationship, apart from real money balances. Detailed results are available from the authors upon request.

$p$ -values show, that no problems with autocorrelated residuals occur. *ARCH* is a Lagrange multiplier test for conditional heteroskedasticity. Again, the residuals do not exhibit such kind of behaviour. Furthermore, they are distributed as normal, as indicated by the Jarque-Bera test. Moreover, the Ramsey *RESET* test does not point to a misspecification of the equation. The cusum of squares test does not indicate any structural break in the regression coefficients, see figure 5. Overall, the empirical evidence in favour of a stable money demand equation for the euro area is strongly supported by the error correction analysis.

*-Table 2 and figure 5 about here-*

## **6 Conclusion**

In this paper we analysed money demand behaviour in the euro area, where special emphasis is given to the issue of stability. In fact, many researchers have detected instabilities especially when data after 2001 are included in the analysis. Such a result casts serious doubts concerning the rationale of monetary aggregates in the monetary strategy of the ECB.

Monetary aggregates play a crucial role in the monetary strategy of the ECB. The rationale of the strategy requires a stable relationship between money and fundamental economic variables, which is re-established in the paper. In particular, we report strong evidence in favour of a stable money demand relationship for the M3 aggregate. This result can be achieved by including inflation in the cointegration vector, i.e. the short run homogeneity restriction between money and prices is not imposed. Furthermore a permanently higher income elasticity since 2002 is taken into account. This break coincides with the introduction of euro coins and banknotes to the public. In this setup, a stable long run money demand relationship is identified. The result is robust over different estimation methods. The corresponding error correction model survives a wide range of specification tests.

Excess liquidity refers to the difference between observed and equilibrium money balances. There are different concepts to define the equilibrium development of M3. Using

the ECB's reference value of 4,5% for annual money growth rates would imply an equilibrium path which grows from an arbitrary chosen starting value in a linear way, that is a linear trend with slope 0.045 (Masuch, Pill and Willeke, 2001, p134). This strategy might be problematic as M3 develops more or less as an I(2) variable. Therefore the monetary overhang or the real monetary gap are strongly preferred as measures of excess liquidity, as the economic situation and the statistical properties of the data are taken into account. The overhang is given by the error correction term and the real monetary gap is identified by equation (4). Applying these concepts suggest that there is no problem with excess liquidity since 2001.

## References

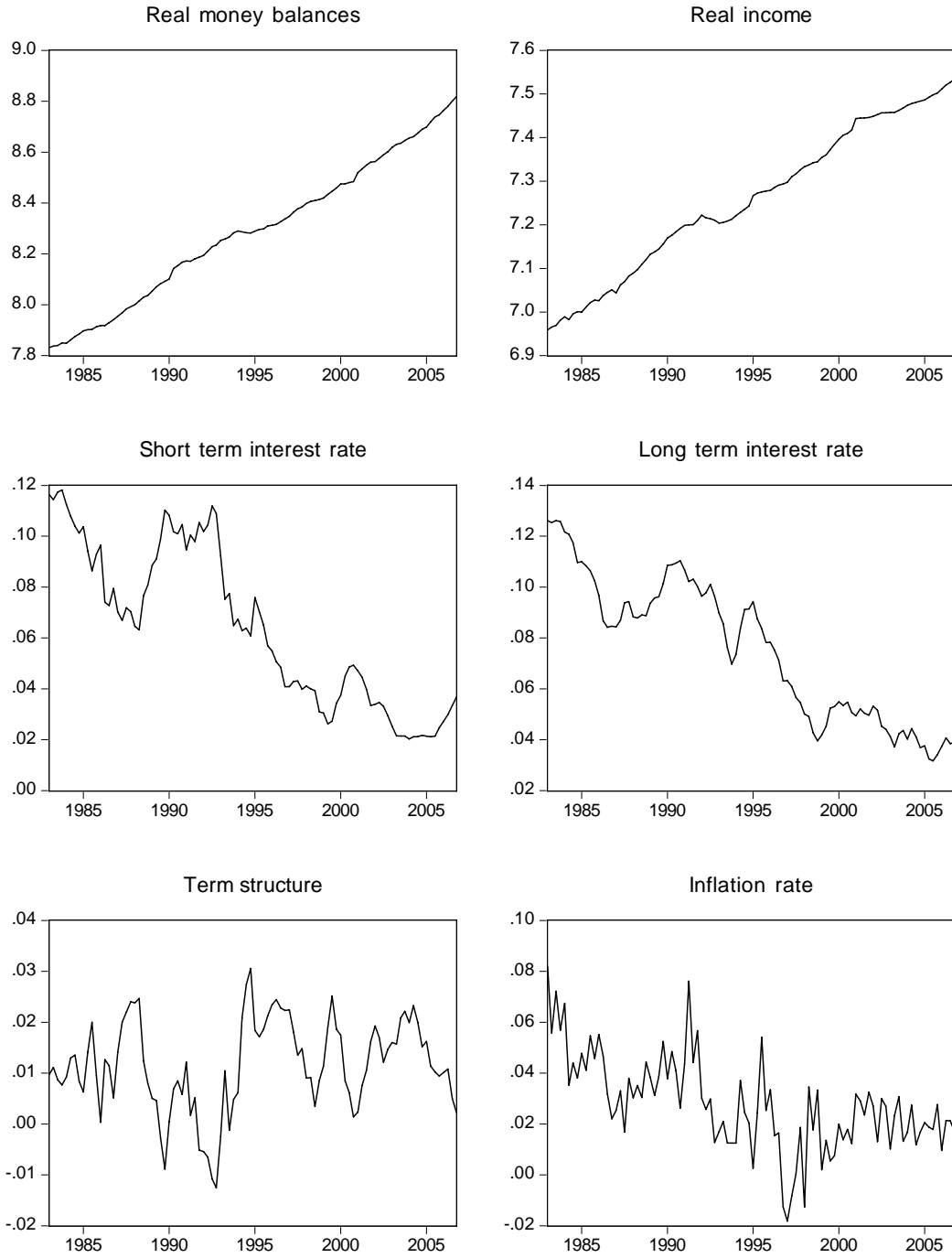
- Artis, M., Beyer, A. (2004): Issues in money demand. The case of Europe, *Journal of Common Market Studies* 42, 717-736.
- Boone, L., Van den Noord, P. (2008): Wealth effects on money demand in the euro area, *Empirical Economics*, forthcoming.
- Bosker, E.M. (2006): On the aggregation of eurozone data, *Economics Letters* 90, 260-265.
- Brand, C., Cassola, N. (2004): A money demand system for euro area M3, *Applied Economics* 8, 817-838.
- Brüggemann, R., Lütkepohl, H. (2005): Practical problems with reduced rank ML estimators for cointegration parameters and a simple alternative, *Oxford Bulletin of Economics and Statistics* 67, 673-690.
- Brüggemann, R., Lütkepohl, H. (2006): A small monetary system for the euro area based on German data, *Journal of Applied Econometrics* 21, 683-702.
- Bruggemann, A. P. Donati and A. Warne (2003): Is the Demand for Euro Area M3 Stable?, in Issing, O. (ed.): *Background Studies for the ECB's Evaluation of Monetary Policy Strategy*, ECB Frankfurt, 245-300.
- Carstensen, K. (2006): Stock market downswing and the stability of European Monetary Union money demand, *Journal of Business and Economic Statistics* 24, 395-402.
- Coenen, G., Vega, J.-L. (2001): The demand for M3 in the euro area, *Journal of Applied Econometrics* 16, 727-748.
- Dreger, C., Wolters, J. (2006): Investigating M3 money demand in the euro area. New evidence based on standard models, *DIW Discussion Paper* 561.
- Ericsson, NR. (1998): Empirical modelling of money demand, *Empirical Economics* 23, 295-315, reprinted in Lütkepohl, H., Wolters, J. (eds.): *Money demand in Europe*, Physica, Heidelberg, 1999, 29-49.
- European Central Bank (2001): *Monthly Bulletin*, May, 41-58.
- European Central Bank (2004a): *The monetary policy of the ECB*, ECB 2nd ed.

- European Central Bank (2004b): Monetary analysis in real time, *Monthly Bulletin*, October, 43-66.
- Fagan, G., Henry, J. (1998): Long run money demand in the EU: Evidence for area-wide aggregates, *Empirical Economics* 23, 483-506, reprinted in Lütkepohl, H., Wolters, J. (eds.): *Money demand in Europe*, Physica, Heidelberg, 1999, 217-240.
- Funke, M. (2001): Money demand in Euroland, *Journal of International Money and Finance* 20, 701-713.
- Gerlach (2004): The two pillars of the European Central Bank, *Economic Policy* 19, 389-439.
- Gerlach, S., Svensson, L. O. E. (2003): Money and Inflation in the Euro Area: a Case for Monetary Indicators?, *Journal of Monetary Economics* 50, 1649-72.
- Golinelli, R., Pastorello, S. (2002): Modelling the demand for M3 in the Euro Area. *European Journal of Finance* 8, 371-401.
- Greiber, C., Lemke, W. (2005): Money demand and macroeconomic uncertainty, *Deutsche Bundesbank Discussion Paper* 26/05.
- Greiber, C., Setzer, R. (2007): Money and housing: Evidence for the euro area and the US, *Deutsche Bundesbank, Research Center, Discussion Paper Series* 1, *Economic Studies* 2007-12.
- Hallman, J.J., Porter, R.D., Small, D.H. (1991): Is the price level tied to the M2 monetary aggregate in the long run?, *American Economic Review* 81, 841-858.
- Hayo, B. (1999): Estimating a European demand for money, *Scottish Journal of Political Economy* 46, 221-244.
- Holtemöller, O. (2004a): Aggregation of national data and stability of euro area money demand, in Dreger, C., Hansen, G. (eds): *Advances in macroeconometric modelling. Papers and Proceedings of the 3rd IWH Workshop in Macroeconometrics*, Nomos, Baden-Baden, 181-203.
- Holtemöller, O. (2004b), A monetary vector error correction model of the euro area and implications for monetary policy, *Empirical Economics* 29, 553-574.

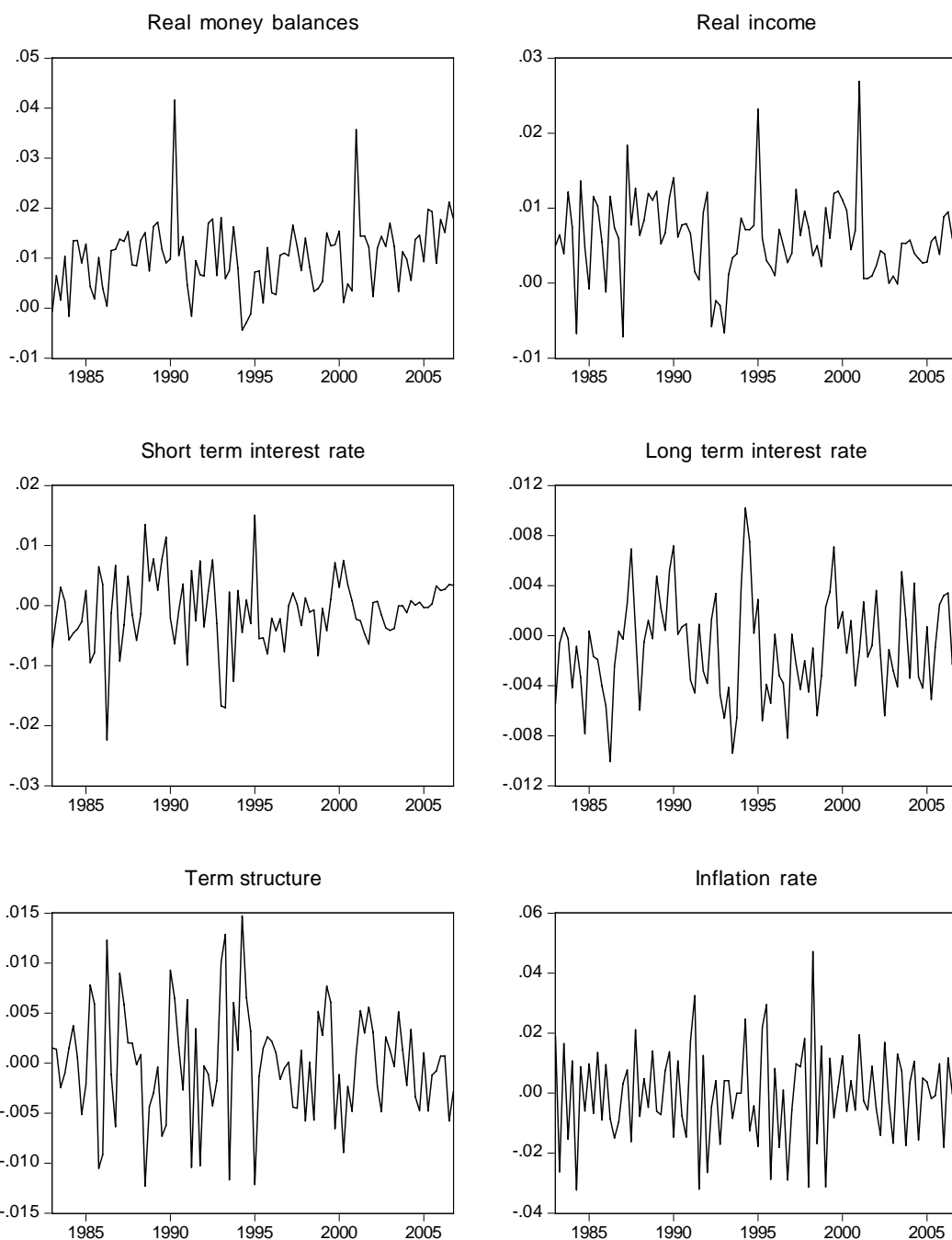
- Hwang, H.-S. (1985): Test of the adjustment process and linear homogeneity in a stock adjustment model of money demand, *Review of Economics and Statistics* 67, 689-692.
- Johansen, S. (1995): Likelihood based inference in cointegrated vector autoregressive models, Oxford University Press, Oxford.
- Kontolemis, Z.G. (2002): Money demand in the euro area. Where do we stand?, IMF Working Paper WP 02/185.
- Lütkepohl, H., Teräsvirta, T., Wolters, J. (1999): Investigating stability and linearity of a German M1 money demand function, *Journal of Applied Econometrics* 14, 511-525.
- MacKinnon, G., Haug, A., Michelis, L. (1999): Numerical distribution functions of likelihood ratio tests for cointegration, *Journal of Applied Econometrics* 14, 563-577.
- Masuch, K., Pill, H., Willeke, C. (2001): Framework and tools of monetary analysis, in: Klöckers, H.J., Willeke, C. (eds): *Monetary analysis. Tools and applications*, European Central Bank, 117-144.
- Neumann, M.J.M., Greiber, K. (2004): Inflation and core money growth in the euro area, *Deutsche Bundesbank Discussion Paper* 36/04.
- Reimers, H.-E. (1992): Comparisons of tests for multivariate cointegration, *Statistical Papers* 33, 335-359.
- von Hagen, J. (2004): Hat die Geldmenge ausgedient?, *Perspektiven der Wirtschaftspolitik*, 423-453.
- Wolters, J., Lütkepohl, H. (1997): Die Geldnachfrage für M3: Neue Ergebnisse für das vereinigte Deutschland, *ifo Studien* 43, 35-54.
- Wolters, J., Teräsvirta, T., Lütkepohl, H. (1998): Modeling the demand for M3 in the Unified Germany, *Review of Economics and Statistics* 80, 399-409.

Figure 1: Variables used in the empirical analysis

A levels

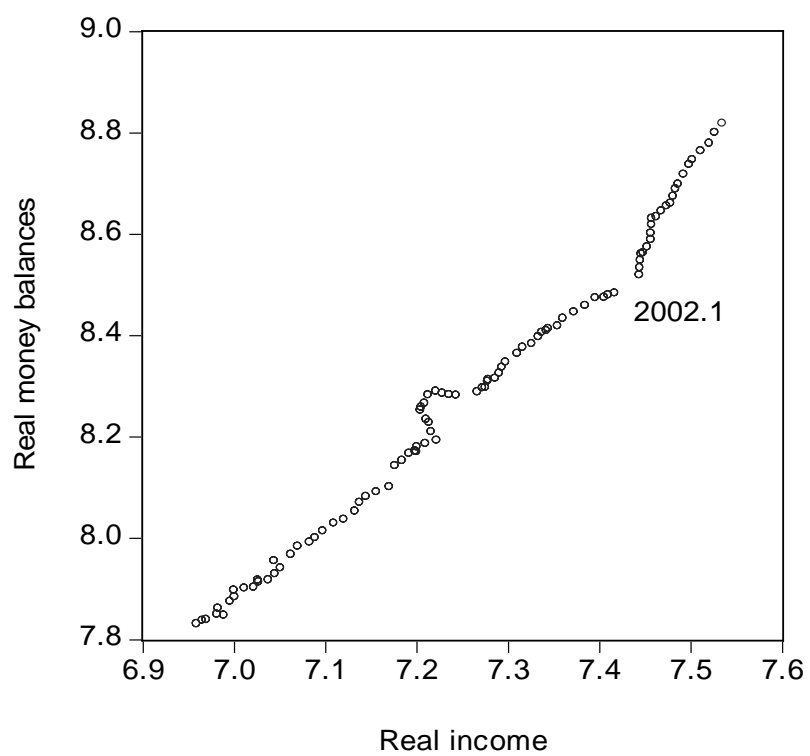


## B First differences



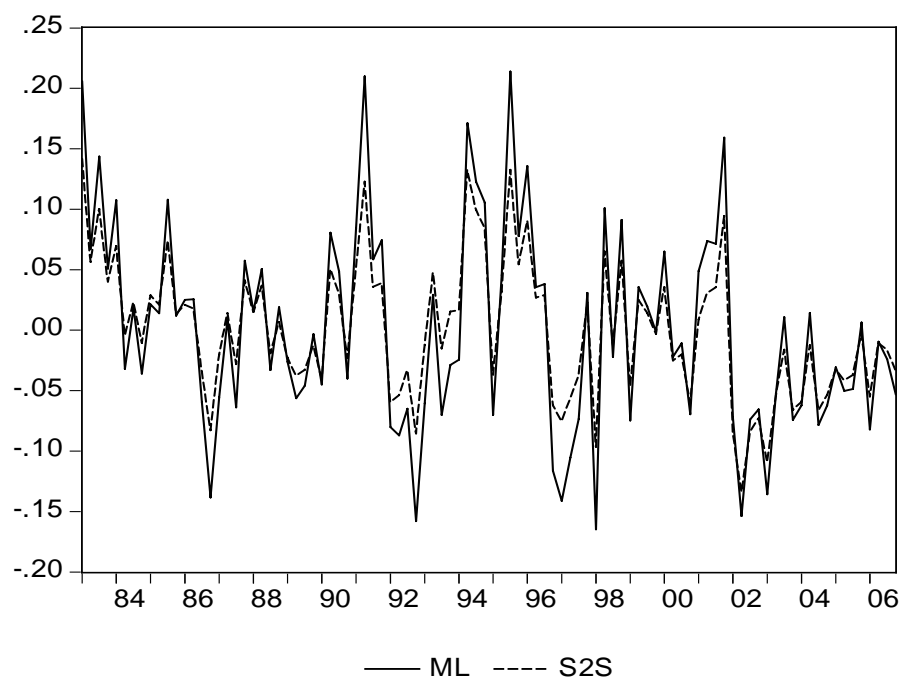
Note: Sample period 1983.1-2006.4. Real money and real GDP in logs. Inflation calculated on the base of the GDP deflator.

Figure 2: Structural break in income elasticity



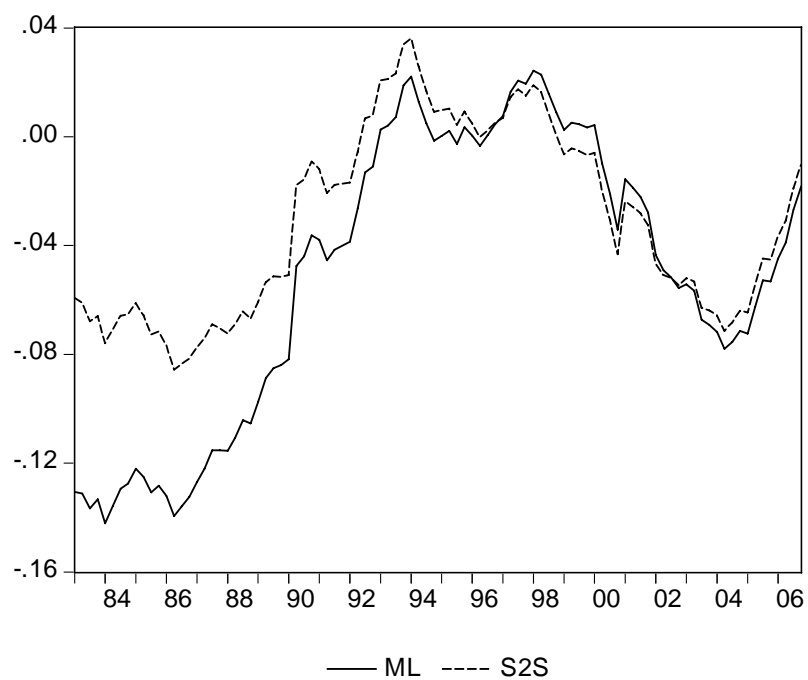
Note: Sample period 1983.1-2006.4. Increase in income elasticity from 2002.1 onwards.

Figure 3: Mean-adjusted deviations from the long run



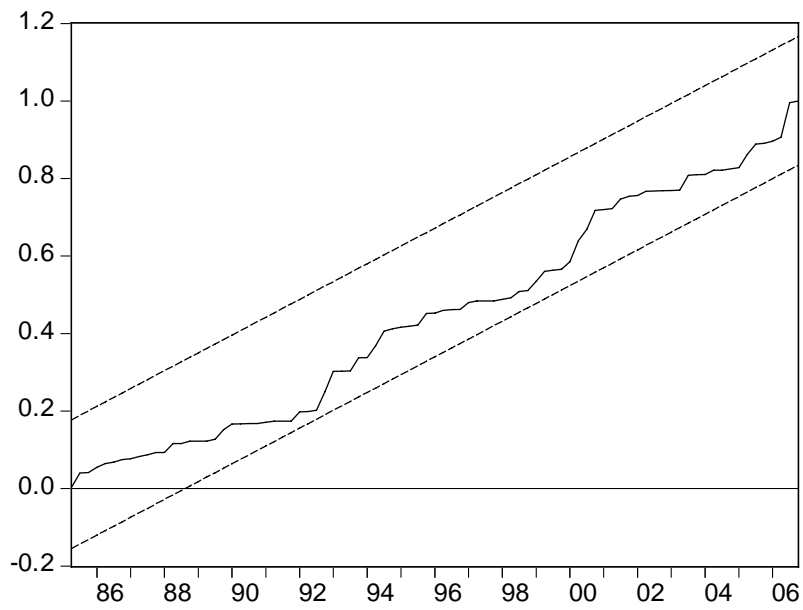
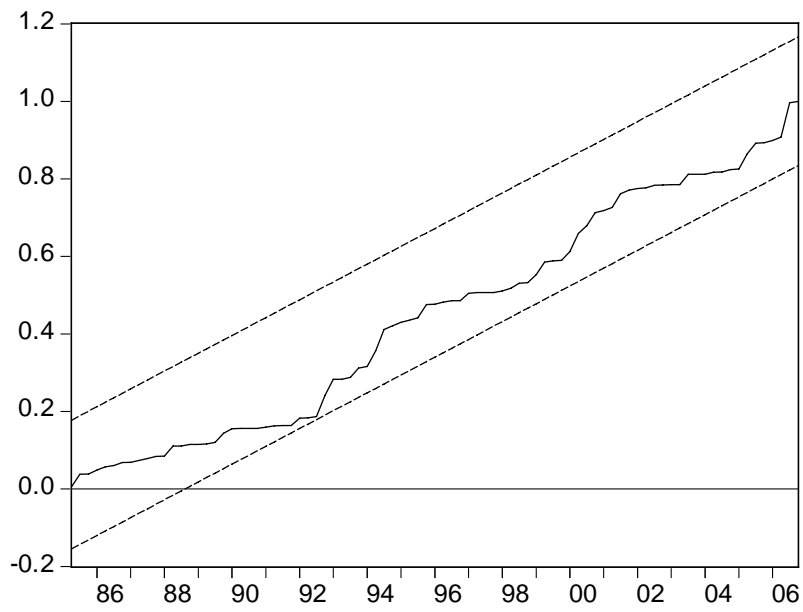
Note: Sample period 1983.1-2006.4. Long run estimated according to (2) and (3), variants include term structure.

Figure 4: Real money gap



Note: Sample period 1983.1-2006.4. Long run estimated according to (2) and (3), variants include term structure.

Figure 5: Cusum of squares of the error correction models



Sample period 1983.1-2006.4. Dashed lines represent 0.05 significance levels. ML model (top) and S2S alternative.

Table 1: Cointegration tests for sample period 1983.1-2006.4

Variables	Rank null hypothesis	Johansen trace test	Finite sample correction
$m-p, y$	0	8.76	
	1	3.84	
$m-p, y, y^*$	0	21.33	
	1	4.83	
	2	0.21	
$m-p, y, \pi$	0	47.97**	46.47**
	1	8.10	
	2	0.20	
$m-p, y, R$	0	29.80	
	1	15.49	
	2	3.84	
$m-p, y, r$	0	22.02	
	1	9.03	
	2	1.38	
$m-p, y, y^*, \pi$	0	76.19**	73.02**
	1	18.44	
	2	4.37	
	3	0.08	
$m-p, y, y^*, R$	0	29.70	
	1	11.91	
	2	5.17	
	3	0.05	
$m-p, y, y^*, r$	0	35.58	
	1	15.15	
	2	5.77	
	3	0.83	

Note: All models estimated with unrestricted constant and impulse dummies for 1990.2 and 2001.1. The finite sample correction is due to Reimers (1992). A (\*), \*, \*\* denotes significance at the 0.1, 0.05 and 0.01 level. Critical values are from MacKinnon, Haug and Michelis (1999), and are also valid for the finite sample correction. Lag order of 1 in underlying VAR models (level specification), according to the Schwarz criterion.

Table 2: Standard specification tests of error correction models

	Equation (4)	Equation (5)
R2	0.66	0.66
SE	0.0042	0.0041
SC	-7.81	-7.82
JB	0.54 (0.76)	0.23 (0.89)
LM(1)	0.00 (0.99)	0.00 (0.95)
LM(4)	0.43 (0.79)	0.38 (0.82)
LM(8)	0.46 (0.88)	0.37 (0.93)
ARCH(1)	0.72 (0.40)	0.65 (0.42)
ARCH(4)	0.43 (0.79)	0.25 (0.91)
ARCH(8)	0.72 (0.68)	0.26 (0.98)
RESET(1)	0.02 (0.89)	0.15 (0.70)
RESET(2)	1.73 (0.18)	1.13 (0.33)
RESET(3)	1.19 (0.32)	1.06 (0.37)

Note: Sample period 1983.1-2006.4. R2=R squared adjusted, SE= standard error of regression, SC= Schwarz criterion, JB=Jarque-Bera test, LM=Lagrange multiplier test for no autocorrelation in the residuals, ARCH=Lagrange multiplier test against conditional heteroscedasticity, RESET=Ramsey test, *p*-values in parantheses.